



Ralph Strayhorn
Chairman of the Board

Scott T. Hamilton
President, Chief Executive Officer

TO: Joint Legislative Commission on Governmental Operations
Joint Legislative Oversight Committee on Agriculture and Natural and Economic Resources
Joint Legislative Economic Development and Global Engagement Oversight Committee
c/o Mr. Brian Matteson
Fiscal Research Division
North Carolina General Assembly
Raleigh, NC

FROM: Scott T. Hamilton
President, Chief Executive Officer

DATE: September 15, 2025

RE: Annual Report

In accordance with the requirements of G.S. 143-712, enclosed are the following:

- 1) Grants made in the prior fiscal year, including the amount, term, and purpose of the grant.
- 2) Outcome data collected by the Golden LEAF Foundation, including the number of jobs created.
- 3) Cumulative grant data by program and by county.
- 4) Unaudited actual administrative expenses and grants made in the prior fiscal year.
- 5) Current fiscal year budget, planned activities, and goals for the current fiscal year.

Enclosures as stated:

cc: The Honorable Josh Stein, Governor of North Carolina
Senator Phil Berger, President Pro Tempore, North Carolina Senate
Representative Destin Hall, Speaker of the House, North Carolina House of Representatives
Ralph Strayhorn, Chairman of the Board, Golden LEAF Foundation
Byron Kirkland, Smith Anderson

Golden LEAF Foundation

Annual Report of Activities
July 1, 2024 - June 30, 2025

Overview

The purpose of this report is to provide an overview of Golden LEAF Foundation activities for fiscal year 2024-2025. For more detailed information regarding a project referenced in this report, please contact the Golden LEAF Foundation staff. This report includes action taken this fiscal year on applications received in the prior fiscal year. Award amounts and project descriptions referenced throughout are the current amounts for awards made during fiscal year 2024-2025, reflecting any adjustments.

These amounts do not include funds for projects that were awarded but subsequently rescinded prior to release of funds. These amounts do not include funds for projects funded in the disaster recovery grant programs, flood mitigation, food distribution assistance program, the COVID-19 loan program, or the Hurricane Helene loan program, as those programs are subject to separate reporting requirements and frequencies. These amounts do not include funds for projects not reported on the Golden LEAF Foundation's IRS Form 990.

Funds are awarded to governmental entities and 501(c)(3) nonprofit organizations to support permissible activities that lead to job creation and economic growth in rural, tobacco-dependent or economically distressed areas.

Summary of Awards

The Golden LEAF Foundation receives applications and makes awards through four primary programs. While these programs share similar priority areas, eligibility, application requirements, maximum award, and required outcomes distinguish each program from the others. Project proposals that do not fit within an established program may be funded as a special initiative. With the exception of the Community-Based Grants Initiative, programs are available year-round.

Open Grants Program	Economic Catalyst Program	SITE Program	Community-Based Grants Initiative (CBGI)
Awards up to \$500,000 for projects in Golden LEAF priority areas and outcomes.	Job creation projects at risk without Golden LEAF participation. Job retention projects are also considered. Funding for eligible projects, typically public infrastructure or workforce development, directly linked to outcomes at a specific company.	Focused on identification, due diligence, and development of new sites for industrial development.	Available in one prosperity zone each fiscal year. Awards are limited to three projects per county, totaling no more than \$1,500,000, with a total of \$11 million available in a prosperity zone.

The Golden LEAF Foundation Board of Directors awarded \$116,016,733.22 to support 67 projects across 43 counties to enable implementation of agricultural, workforce preparedness, job creation and economic investment, and community, capacity and competitiveness initiatives. Funds awarded to local government entities and 501(c)(3) nonprofit organizations through the Economic Catalyst Program for announced projects are projected to support the creation of at least 14,760 jobs and capital investment of more than \$5.7 billion over the next few years.

Strategic Planning

The Golden LEAF Foundation Board of Directors adopted a FY 2022-2026 strategic plan in February of 2021. The goal of the strategic planning process was to assess how Golden LEAF can increase the impact of its mission through implementation of programs that support outcomes in key priority areas.

Flood Mitigation

The N.C. General Assembly appropriated \$25 million to the Golden LEAF Foundation to award to local governments for projects to reduce flooding. The Golden LEAF Foundation reports on the status of this program to the N.C. General Assembly through the Office of State Budget and Management.

Food Distribution Assistance Program

The N.C. General Assembly appropriated \$10 million in federal American Rescue Plan Act (ARPA) funds to the Golden LEAF Foundation to provide grants to nonprofits to enhance food distribution. The Golden LEAF Foundation reports on the status of this program to the N.C. General Assembly through the Department of Agriculture and Consumer Services.

Shell Building Pilot Program

The N.C. General Assembly appropriated \$10 million to the Golden LEAF Foundation to implement the Golden LEAF Shell Building Pilot Program (Section 11.7 of S.L. 2023-134). Under the authorizing legislation, governmental and charitable nonprofit entities in Ashe, Bladen, Columbus, Franklin, Halifax, Robeson, and Scotland counties are eligible to apply for funding. The program is intended to provide grants to increase the number of available, publicly-owned industrial buildings suitable for new or expanding businesses, other than retail, entertainment, or sports projects. Information regarding this program is attached to this report.

Hurricane Helene Response

Following Hurricane Helene in September 2024, the Golden LEAF Foundation awarded \$7.5 million to Mountain BizWorks to establish the WNC Strong: Helene Business Recovery Fund to make loans to small businesses impacted by the storm. The N.C. General Assembly then appropriated \$50 million to Golden LEAF to increase funding available in the Fund to meet business demand. Golden LEAF also established the Hurricane Helene Disaster Relief Initiative, with funding through June 30, 2025 totaling \$4,997,654 for 14 projects. Funds through the relief initiative were focused on supporting nonprofits providing assistance to survivors including home repair and temporary rental assistance.

Golden LEAF Foundation Awards

July 1, 2024 - June 30, 2025

Priority Area	Number of Projects	Total Awarded*
Job Creation and Economic Investment	17	\$81,123,850.00
Workforce Preparedness	29	\$13,326,641.22
Agriculture	2	\$1,500,000.00
Golden LEAF Scholars Program	4	\$7,059,588.00
Special Initiatives	1	\$8,000,000.00
Hurricane Helene Relief	14	\$4,997,654.00
Total	67	\$116,016,733.22

*Numbers do not include projects that have been awarded and then rescinded with no funds released. Funds awarded for projects in the disaster recovery grant program, flood mitigation, food distribution assistance, or State-funded Hurricane Helene Response are not reflected. Numbers do include funds awarded for confidential economic development projects that have not yet been announced, if any. Numbers do not include funds for projects not reported on the Golden LEAF Foundation's IRS Form 990.

Golden LEAF Foundation Impact Data

The Golden LEAF Foundation assesses the success of each project by reviewing outcomes specific to each project. Data is reported by grantees and reviewed by Golden LEAF Foundation staff against established goals. Staff also conduct site visits and use other strategies to determine the success of awarded projects.

Impact Data as Reported by Grantees*	†FY2025
Verified New Positions Filled	1,665
New Payroll	\$116,123,735.64
Capital Investment	\$3,842,706,353.53
People Trained/Worker Skills Upgraded	4,722
Industry/3rd-Party Credentials Earned	2,970
Degree/Diploma/Certificates Earned	1,752

†Incremental impact for reports reviewed for FYE 6/30/2025

*Includes data from prior fiscal years that was not previously reported.

Golden LEAF Foundation Priority Area Activities

Job Creation and Economic Investment

The Golden LEAF Foundation partners with the N.C. Department of Commerce, the Economic Development Partnership of North Carolina, and local governments and economic development organizations to provide gap funding to assist with job creation in rural, economically distressed and/or tobacco-dependent communities.

Through the Economic Catalyst program, Golden LEAF awarded \$75,225,000 to support projects that are projected to enable the creation of 14,760 jobs and capital investment of more than \$5.7 billion over the next few years. These economic development projects were at risk of not locating or expanding in North Carolina but for Golden LEAF support. Golden LEAF funds are used to fill a funding gap not addressed by state and local economic development programs. When determining whether to fund a project and at what level, Golden LEAF considers several factors, including the economic distress of the community, the expected capital investment, the number and quality of jobs to be created, and the importance of the project to the State.

Grantee	Award Amount	Purpose	Projected New Jobs	Projected Average Annual Wage	County Average Annual Wage	Projected Private Capital Investment
City of Greensboro	\$60,000,000.00	Water and sewer infrastructure	14,000	\$90,000	\$60,574	\$4.5 billion
County of Hoke	\$1,400,000.00	Sewer infrastructure	217	\$65,000	\$42,633	\$95 million
City of Lumberton	\$825,000.00	Relocation of electrical infrastructure	123	\$50,218	\$42,730	\$146 million
Wilson Community College	\$13,000,000.00	Equipment for public training facility	420	\$108,000	\$54,067	\$1 billion

Golden LEAF also awards funds for projects with economic development outcomes through programs other than the Economic Catalyst program. Eligible uses of Golden LEAF funds include: construction or improvement

of public water, sewer, or road infrastructure and other strategies to support job creation. Economic development outcomes include creation of workforce housing units.

Grantee	Award Amount	Golden LEAF Program	Purpose & Outcomes
Caldwell Hospice and Palliative Care, Inc. dba AMOREM	\$67,200.00	Open Grants	This award provides funding to support the initiative of Caldwell Hospice and Palliative Care Inc., dba AMOREM to establish a 7-bed patient care unit (PCU) to serve the populations of Ashe, Avery, and Watauga counties. This unit will provide acute pain and symptom management, respite care, and residential hospice care services. Establishing the PCU will generate 15 new healthcare positions, 11 full-time and 4 part-time (13.35 FTEs), with an average annual salary of \$41,298.50. Golden LEAF funds will be used to procure medical equipment for the PCU's operations.
Center for Agriculture and Food Entrepreneurship	\$148,000.00	Open Grants	This award provides funding to support the expansion of manufacturing at Blue Ridge Food Ventures (BRFV), a shared-use facility located at the Enka Campus of Asheville-Buncombe Technical Community College. Additional equipment will enable users of the facility to increase manufacturing capacity, operate more efficiently, and complete additional tasks resulting in new products and offerings. The Center for Agricultural and Food Entrepreneurship, which owns BRFV, has worked closely with 10 of its current tenants and utilized data from potential tenants in the development of its expansion plan. It is expected that 25 new full-time jobs will be created and seven new businesses will be started as a result of these increases in manufacturing capacity and efficiency. Golden LEAF funds would be used for the additional equipment needed for the expansion.
City of Whiteville	\$500,000.00	Open Grants	This award provides funding to the City of Whiteville to renovate a publicly owned 17,000 square foot facility to facilitate the expansion of Provalus, a private company providing US-based outsourcing for companies seeking dependable, quality IT services. Provalus will lease the building from Whiteville. The \$2.1 million renovation is expected to result in the creation of at least 67 new jobs, with an average annual wage of \$45,098.18, and \$1 million in private capital investment. Golden LEAF funds will be used for building renovations.
Habitat for Humanity of Goldsboro-Wayne, Inc.	\$500,000.00	Open Grants	This award provides funding to Habitat for Humanity of Goldsboro-Wayne Inc. to support infrastructure needed to serve Phase 1 of the development of McNair Heights Neighborhood. The \$1.9 million infrastructure project includes water, sewer, road, sidewalk, curb, gutter, and stormwater. In Phase 1, 31 new homes projected to house 122 people will be constructed, of which 25 are planned for low- to moderate-income families. The remaining 6 lots will be sold to local market-rate home builders to create a mixed-income community. Golden LEAF funds will be used for infrastructure costs.
Iredell County EDC, Foundation	\$750,000.00	CBGI	This award provides funding to Iredell County EDC Foundation to extend Herring Industrial Drive towards lots 5 and 6 of Mooresville Business Park East and to conduct due diligence studies on both lots. The road will be extended approximately 500 linear feet eastward to access the approximately 67-acre and 58-acre lots respectively. The project is expected to result in \$2.2 million in public infrastructure investment, \$100 million in private capital investment, and 300 new jobs with an average annual salary of \$65,000. Golden LEAF funds will be used for road construction costs including design and engineering, and due diligence studies for lots 5 and 6.
Town of Nashville	\$500,000.00	Open Grants	This award provides funding to the Town of Nashville to extend its water distribution system 2,500 feet to an 8.3-acre site that is the anticipated site of UNC Nash Health's proposed 16,000 sf medical facility. The facility will house primary care and urgent care services. There is a health professional shortage in Nash and surrounding counties. A physician needs assessment conducted for UNC Nash Health reported a deficit of more than 20 primary care providers in its primary and secondary service area. The planned facility will support 21 full time jobs, 15 of which will be new positions: 10 medical staff with an average annual wage of \$55,000, and 5 physicians with an average annual wage of \$310,000. Golden LEAF funds will be used for construction.
University of North Carolina at Chapel Hill	\$250,000.00	Open Grants	This award provides funding to support the expansion of the NCGrowth-facilitated project that helps anchor institutions such as universities, hospitals, and local governments increase purchasing and procurement from businesses in rural and tobacco-dependent communities, creating more good jobs. With Golden LEAF support, NCGrowth began a

Grantee	Award Amount	Golden LEAF Program	Purpose & Outcomes
			pilot that started in the Sandhills region in 2021. This award will expand the project to support businesses in two new regions: Central and Western North Carolina. To enhance procurement from targeted firms, UNC-CH proposes engaging with Western Carolina University, Central Carolina Community College, the Eastern Band of Cherokee Indians, nearby hospitals, county, local, and tribal governments, and other significant anchors with substantial budgets. This approach will elevate purchasing power and foster strategic partnerships with organizations. Golden LEAF funds will be used for personnel, meetings, travel, printing, binding, supplies, and consultant expenses.

SITE Program

Golden LEAF recognizes that rural and economically distressed communities must have sites available for development to attract new businesses and create opportunities for existing businesses to expand. To address this need, Golden LEAF created the SITE Program. Through this program, Golden LEAF will provide support to communities to identify potential sites for economic development, enable completion of due diligence on sites already identified, or to extend public utilities to or conduct grading and clearing of sites for which due diligence has been completed. Golden LEAF will accept applications from organizations in all counties, but prioritizes awards within counties that have been persistently economically distressed (as demonstrated by County Tier status determined by the N.C. Department of Commerce) and in economically distressed, rural, and tobacco-dependent communities.

Communities are able to begin the process at any of the three phases, and a site may progress from identification through to development over time.

Identification	Due Diligence	Development
Support to identify potential industrial sites in communities that do not currently have quality industrial sites to market.	Funding to complete eligible due diligence activities such as environmental assessments, archaeological analyses, and mapping.	Funding for public infrastructure and, for publicly owned sites, clearing and grading, to benefit sites that have completed the due diligence necessary to demonstrate that the site is suitable for development.

The first awards in the SITE Program were made in December 2021. The Golden LEAF Foundation Board of Directors allocated \$12.5 million for the program in FY25. The following organizations were awarded through the SITE - Identification phase. Funds will provide services, contracted by Golden LEAF, to evaluate and identify site(s) in the identified project area suitable for industrial development.

- Vance County
- Lenoir County

The following organizations were awarded funding through the SITE program to conduct due diligence, to extend public infrastructure, or to complete grading.

Grantee	Award Amount	Purpose & Outcomes
Due Diligence		
County of Greene	\$113,250.00	To conduct due diligence analyses on approximately 630 acres of farmland under option by the county.
Jacksonville-Onslow Economic Development Partnership	\$49,400.00	To conduct due diligence analyses on approximately 35 acres at Corbett Ave and Belgrade-Swansboro Road in west Swansboro.

Grantee	Award Amount	Purpose & Outcomes
Development		
County of Northampton	\$1,500,000.00	For funding to extend 10,400 linear feet of 8" wastewater line and install a supplemental lift station. The project will support 225 acres in the Northampton County Commerce Park where the county anticipates recruiting manufacturing related businesses. The county projects the creation of 100 new full-time jobs with an average annual wage of \$53,750, compared to the county average of \$49,123, \$75,000,000 in private capital investment, and \$2,961,322.20 in investment in public infrastructure. The project will also leverage funding from the State's Industrial Development Fund.
County of Robeson	\$1,500,000.00	for development of 17 acres within the COMTech Business Park. The county anticipates that successful industry recruitment to the site would create approximately 75 new full-time jobs with an average annual wage of \$45,550 which is higher than the county average of \$42,730, \$9,152,000 in private capital investment, and \$9,841,695 in public investment. Golden LEAF funds are requested for site work related to clearing & grading, erosion control, adding backfill, and creating an access road. This site is also the location of a Golden LEAF funded shell building project.

Workforce Preparedness

Golden LEAF supports the development and expansion of workforce development programs at North Carolina Community Colleges and nonprofit organizations. As businesses evolve, workforce training must keep pace. Therefore, new equipment must be acquired, faculty trained, and facilities renovated. Eligible uses of Golden LEAF funds include: professional development for faculty, equipment and technology, and building renovations. Golden LEAF supports projects to help students graduate with the technical skills necessary to enter work and become productive citizens.

Grantee	Award Amount	Golden LEAF Program	Purpose & Outcomes
Anson County Schools	\$300,000.00	CBGI	This award provides funding to Anson County Schools to expand the existing Agriculture Career and Technical Education (CTE) Programs in the areas of animal sciences, agriculture sciences, and natural resources. Although these existing CTE programs have strong enrollment, the current lack of equipment and labs limits the district's ability to offer Level II courses, and many students are therefore not able to complete a CTE pathway. The project will provide opportunities for Anson County Schools to expand curriculum offerings to include new courses and specialized training in areas such as hydroponics, sustainable farming practices, and agribusiness management. Upfitted labs and training equipment will provide students with hands-on learning experiences. Students will also participate in work-based learning opportunities at local agricultural businesses and farms and participate in field trips to regional agribusinesses. Forty-five students are expected to complete a CTE pathway in animal sciences, agriculture sciences, or natural resources per year. Golden LEAF funds will be used for equipment, supplies, personnel, and transportation costs.
Barton College	\$1,000,000.00	Open Grants	This award provides funding to Barton College, a private college in Wilson, NC, to support its new School of Health Sciences (SHS) complex. Through a two phase approach, Barton will expand the SHS to a 70,000 square feet. The new SHS complex is expected to be a transformative facility designed to use advanced hospital simulation and multi-discipline integration to graduate top-performing healthcare students and practitioners to focus on rural healthcare. Phase 1 will be the renovation of the Nixon Nursing Building and Moye Science Building at an estimated cost of \$21m. A simulation hospital will be the centerpiece of Phase 1 along with renovating existing laboratory and classroom space. This will allow for the expansion of Barton's nursing and exercise science programs, increasing graduates from 49 to 83 annually. Phase 1 of the new SHS complex will allow for further expansion of nursing programs (BSN, MSN, and Nurse Practitioner) beyond what has been accomplished with prior Golden LEAF funding. Golden LEAF funds will be used for training equipment and general classroom/lab equipment for the nursing, exercise science, and biology programs.

Grantee	Award Amount	Golden LEAF Program	Purpose & Outcomes
Beaufort Community College	\$405,000.00	Open Grants	This award provides funding to Beaufort County Community College (BCCC) to support the expansion of its simulation lab to help meet healthcare industry demands and address the shortage of qualified professionals in local rural communities. BCCC currently operates a 972 square foot simulation lab with three beds. County funding will be used to convert a lecture hall into a second simulation lab measuring 3,825 square feet and accommodating up to 15 beds. The larger simulation lab will include simulation manikins and medication carts similar to tools used in real-world healthcare environments. The project plans to increase the number of graduates in the LPN program from 12 to 27 annually and the number of graduates in the ADN program from 29 to 48 annually. BCCC expects that 100% of graduates will successfully pass the NCLEX licensing exam. Golden LEAF funds will be used for equipment, training, and instructional supplies and materials.
Carteret Community College Foundation, Inc.	\$297,860.00	Open Grants	This award provides funding to Carteret Community College Foundation, Inc. to support Carteret Community College's Carteret Works program in partnership with Carteret County Public Schools, local businesses, and NCWorks. The project aims to increase the pipeline of students into the regional workforce by connecting high school and college students and disconnected adults to local businesses for paid opportunities where they can gain real-world experience, earn high school and college credits, and acquire industry-recognized credentials. The program will focus on three career fields: healthcare, trades, and hospitality and culinary, and expects to have 45 students complete a career field annually by the program's third year. Each completer will earn a third party or industry credential, receive employability training to prepare for a professional work environment, and participate in an internship or apprenticeship. The college will track exiting students to assess their successful transition to post-completion employment. Golden LEAF funds will be used for staffing, travel, professional development, student stipends and transportation, educational expenses, supplies, and consultation.
Christian Recovery Centers, Inc	\$175,000.00	Open Grants	This award provides funding to Christian Recovery Centers Inc. (CRCI) to support establishment of a property maintenance and remodeling social enterprise in response to the surging residential development in Brunswick and surrounding counties. CRCI will offer a cabinetry and countertop apprenticeship and a computer aided design (CAD) apprenticeship to its program residents, who are individuals recovering from addiction. These apprenticeships will aid them as they transition back into independent living. CRCI will offer the program in collaboration with Brunswick Community College at the CRCI Campus in Ash, North Carolina. Residents completing the training will earn a NCCER certification and a CAD Certificate of Completion. CRCI anticipates graduating 16 residents annually from the program who will be prepared for cabinet and countertop installation positions with CRCI and local employers. Golden LEAF funds will be used for property upfit and to purchase utility and transport vehicles, supplies, and for advertising.
Cleveland Community College	\$622,662.98	CBGI	This award provides funding to Cleveland Community College (CCC) to establish a Health Science Academy, which will include health science training programs in nursing, medical assisting, medical sonography, radiography, and surgical technology. The initiative is part of a three-tiered educational strategy being implemented by CCC, Gardner-Webb University, and Cleveland County Schools to address the workforce shortage in Cleveland County. CCC will introduce the Health Science Academy as a new high school dual enrollment program which will be housed in facilities renovated with support from State Capital Infrastructure Funds. CCC plans to collaborate with Cleveland County Schools and Gardner-Webb University to develop the academy and related programming, which will include summer experiences designed to cultivate interest among middle and high school students in health sciences careers. CCC aims to increase the number of students attaining completion and receiving third-party credentials from 3 to 50 annually in the health science-related programs. Golden LEAF funds will be used for equipment, supplies, and personnel.

Grantee	Award Amount	Golden LEAF Program	Purpose & Outcomes
Cleveland Community College	\$300,000.00	Open Grants	This award provides funding to support Cleveland Community College's (CCC) expansion of its Heavy Equipment Operator (HEO) Program. With Golden LEAF support, the first HEO training academy enrolled six students sharing four pieces of equipment in 2021. Since then, CCC has trained 87 operators to learn technical knowledge and skills to operate and maintain a variety of heavy equipment. The demand for heavy equipment operators in the Cleveland County region exceeds the supply of trained students; over the past three years 955 jobs that require HEO training were added, and an expected 7,464 trained workers are needed to fill operator jobs in the next seven years. CCC will leverage other funding sources to build a facility, buy additional equipment, and light the campus to expand course offerings. CCC expects to increase the number of students trained annually from 55 to 75 and to increase those earning industry-recognized credentials from 46 to 69. Golden LEAF funds will be used to purchase additional pieces of equipment such as a compact/autonomous excavator, dirt roller, and tractor.
Cleveland County Schools	\$360,590.58	CBGI	This award provides funding to Cleveland County Schools (CCS) to expand the district's healthcare education pathway participation. The expansion is part of a three-tiered educational strategy being implemented by CCS, Gardner-Webb University, and Cleveland Community College to address the workforce shortage in Cleveland County. This CCS component of the strategy is specifically designed to address the needs of 150 at-risk high school students at CCS's alternative school, Turning Point Academy, who are not adequately prepared for post-secondary opportunities at the community college. CCS plans to enroll the 150 students at Turning Point Academy in a foundational health science course each year to introduce them to careers in Allied Health Sciences and prepare them for future coursework at the community college's Health Science Academy. This exposure is expected to lead to 50 students completing the CTE health sciences pathway and 20 earning academic credentials from Cleveland Community College. Golden LEAF funds will be used for personnel, renovations, equipment, supplies, furniture, and transportation.
College of the Albemarle	\$500,000.00	Open Grants	This award provides funding to the College of Albemarle (COA) to support the expansion of multiple health sciences programs and the establishment of a new dental hygiene program. The college expects to break ground on its new Health Sciences Regional Education Center in Spring 2025. This facility, which will house a 3,500 sq. ft. advanced simulation center, will serve as a centralized hub for collaboration and state-of-the-art training. COA will partner with Eastern AHEC, Sentara Albemarle Medical Center, ECU Health, and long-term care facilities to expand student access, apprenticeships, and workforce development initiatives. Expected outcomes from this project include 10 graduates annually from the new Dental Hygiene program and increasing graduates from the RN, LPN to ADN, and LPN programs by 40 (from 44 to 84 students) annually. Golden LEAF will be used for technology and equipment for the simulation center.
Elizabeth City Pasquotank Public Schools	\$166,000.00	Open Grants	This award provides funding to Elizabeth City Pasquotank Public School (ECPPS) to support a new educational opportunity for high school students. ECPPS will establish high school career academies where students will complete general high school requirements in a smaller learning community while participating in workforce preparedness in the areas of aviation, agriscience, and engineering. The academies are expected to serve 60 new students annually across two high schools. Cohorts will enroll together in select core classes and CTE Career Pathway courses aligned with the academy. Workforce preparedness, including job shadowing, soft-skill development, and internships, will be integrated into coursework throughout the course sequence. The Chamber of Commerce, STEM East, and local industries will create a business advisory board for the program that will inform school partners about industry needs and secure real-world opportunities for the students. Golden LEAF funds will be used for technology, professional development, supplies and materials, and student credentialing.

Grantee	Award Amount	Golden LEAF Program	Purpose & Outcomes
Gardner-Webb University	\$290,408.52	CBGI	This award provides funding to Gardner-Webb University (GWU) to implement a Summer Bridge Program for high school students and to enhance the hands-on experiences of its nursing students. The Summer Bridge Program is part of a three-tiered educational strategy being implemented by GWU, Cleveland County Schools, and Cleveland Community College to address the workforce shortage in Cleveland County. It is anticipated that 40 students will enroll in the summer experience and will be introduced to various fields within the health sciences, such as nursing, pharmacy, and public health. The program will offer interactive activities such as lab work, simulations, and shadowing healthcare professionals. These hands-on experiences allow students to see the practical applications of the skills they would learn in a health sciences career pathway. This exposure is expected to lead to increased enrollment in the schools' nursing programs which include the Associate Science of Nursing, Bachelor of Science in Nursing (Traditional and Accelerated), and Doctor of Nursing Practice (Family Nurse Practice and Psychiatric Nurse Practitioner) as well as to third party credentials. Additionally, approximately 220 undergraduate nursing students and an estimated 100 graduate nursing students, annually, will have the opportunity to increase their hands-on experience while enrolled in the nursing programs. Golden LEAF funds will be used for equipment, supplies, and personnel costs.
Gaston College	\$125,000.00	CBGI	This award provides funding to Gaston College, a community college, to enhance its welding program to better meet the needs of industry. Local industry projects hiring more than 118 qualified welders over the next three years. The average annual wage for welders in Gaston County is \$50,900. The existing welding lab, which is at capacity, has equipment that limits techniques that can be taught. More advanced machinery and equipment will allow the college to provide skills training that better aligns with the current and future needs of local industry. The college will continue to graduate 50 welding students annually but with stronger skill sets. Golden LEAF funds will be used for a crane and welding machines.
Gaston College	\$1,034,600.00	CBGI	This award provides funding to Gaston College, a community college, to support the establishment of the Lincoln County Health Academy in partnership with Lincoln County Schools and with Atrium Health Lincoln that anticipates hiring 108 LPN and 68 paramedic professionals over the next three to five years. The academy is designed to provide students with pathways to careers in healthcare occupations to meet a critical need for the Lincoln County community. The project will support three pathways: Foundation of Healthcare, Emergency Medical Technician/Paramedic Medicine, and Practical Nursing. The project plans to graduate 28 students from the program annually with the expectation that those students will earn industry credentials. Golden LEAF funds will be used for personnel, equipment, and outreach and marketing for the program.
Greene County Schools	\$499,708.00	Open Grants	This award provides funding to Greene County Schools (GCS) to expand the animal sciences, agriculture sciences, and auto mechanics Career and Technical Education (CTE) programs at Greene Central High School. With a \$62 million Needs Based Public School Capital Funds grant awarded by the State, GCS is replacing its high school with a new high school facility and a new CTE building that will allow GCS to expand these CTE programs and offer more classes per year, resulting in 200 students per year completing one of the three CTE pathways. Golden LEAF funds will be used for training equipment for the three CTE programs and construction of a horticultural building.

Grantee	Award Amount	Golden LEAF Program	Purpose & Outcomes
Harrells Christian Academy Inc	\$350,000.00	Open Grants	This award provides funding to Harrells Christian Academy (HCA), a K-12 private school in Sampson County, to support the expansion of its agricultural education programs. HCA plans to construct an agricultural education facility adjacent to its existing greenhouse. The new facility will provide hands-on training and allow for the creation of three additional learning spaces supporting HCA's newly created honors agricultural education pathway. Through a partnership with University of Mount Olive and Sampson Community College, dually enrolled high school students will receive training in Animal Science and Ag Mechanics (welding, woodworking, and small engine mechanics) to prepare them for high-demand occupations serving companies such as Smithfield Foods, Prestage Farms, House of Raeford, Hog Slat, and Murphy Family Ventures. Students meeting the requirements for certification set by UMO will receive \$5,000 scholarships to continue their ag studies at UMO. The project anticipates 25 dually enrolled students will complete an ag-related pathway with partnering colleges and 32 students will earn at least one industry third-party certification or credential annually. Golden LEAF funds will be used for construction and equipment.
Hights Inc	\$477,926.00	Open Grants	This award provides funding to support Career Connect, for vulnerable youth in Clay, Cherokee, and Graham counties and the Qualla Boundary. Career Connect builds upon and expands HIGHTS' similar work in Jackson, Swain, Macon, and Haywood counties which was also funded by Golden LEAF and which HIGHTS expects to continue in partnership with local school systems and with other sources of funding. Career Connect will serve Eastern Band of Cherokee Indian youth, juvenile justice involved youth, alternative high school students, and community college finishers (up to age 25). A new Career Academy will provide five weeks of employability skills training, industry and college tours, and paid internships with employers in high demand fields such as the healthcare, construction, technology, and automotive industries. Expected outcomes for this project include 40 participants earning a third-party or industry recognized credential, 60 students participating in work-based learning experiences (internship, apprenticeship, pre-apprenticeship), and 30 participants placed in jobs and apprenticeships. Golden LEAF funds will be used for personnel, travel, paid work-based learning experiences, and other participant support services. HIGHTS will also use WIOA funding for this project.
Inner Banks STEM Center	\$163,000.00	Open Grants	This award provides funding to the construction of a 13,000 sq. ft. Technology & Science Center at the Washington-Warren Airport Industrial Park. Inner Banks STEM Center (IBX STEM) will receive \$800,000 for transferring its existing 6,000 sq. ft. facility to the City of Washington and will use those funds along with, along with Golden LEAF funding, to build the new larger facility. This larger facility will allow an expansion of the Aviation Academy launched in partnership with Beaufort County Community College to prepare high school students to take the FAA knowledge tests for the Private Pilot License or Part 107 UAV Commercial Drone License. In partnership with Beaufort County Schools, the Technology & Science Center will serve as a youth career pathways hub for aviation, boating, and renewable energy programs. The project anticipates that 79 students will complete at least one curriculum program annually and at least 45 students will earn at least one industry/third party certification or license. Golden LEAF funds would be used for materials and construction costs.
Johnston Community College Foundation, Inc.	\$500,000.00	Open Grants	This award provides funding to Johnston Community College Foundation to assist with the expansion of programs in applied engineering, computer-integrated machining, and welding offered by Johnston Community College (JCC). The college is relocating these programs to the new Advanced Technology Center (ATC) in Four Oaks. The ATC, a new 67,000 square foot facility that cost \$35 million, is a public-private partnership led by the I-95/I-40 Cross Roads of America Economic Development Alliance. Relocating these programs to the ATC will provide students with hands-on access to advanced technologies and state-of-the-art equipment. The college plans to incorporate four new National Coalition of Certification Center certifications into the curriculum, enhancing workforce readiness. This initiative is expected to increase the capacity of the applied engineering and welding programs by 12 students each, bringing the total capacity to 24 students per program. The computer-integrated machining program will also offer additional NC3 certifications to students. Golden LEAF funds will be used for equipment.

Grantee	Award Amount	Golden LEAF Program	Purpose & Outcomes
Martin Community College	\$499,899.14	Open Grants	This award provides funding to support Martin Community College's (MCC) expansion of its Emergency Medical Services Simulation Center to significantly increase training for emergency medical services students. In 2023, MCC's EMS Division enrolled 97 students in various EMS initial credentialing programs. Of those, 53.6% were successful in completing the program. With the expansion of the EMS Simulation Center, MCC will be able to accommodate a higher number of students and increase one-on-one instruction through simulation, resulting in higher course completion rates. The job prospects for paramedics and EMTs have increased significantly, to include hospital and private practice employers. Also, with the recent closure of Martin General Hospital, EMS workers are now serving as critical front line healthcare responders. By doubling enrollment and increasing retention, MCC expects to increase the number of students trained annually as EMTs and paramedics from 24 to 75 and to increase those earning industry-recognized credentials from 20 to 67. Golden LEAF funds will be used for equipment/supplies, furnishings, and technology hardware/software.
Randolph Community College	\$493,000.00	Open Grants	This award provides funding to Randolph Community College (RCC) to establish a new Heavy Duty Equipment Training Program and to provide heavy equipment training to students in existing programs such as Agriculture and Construction Trades. With the announcements of Toyota, Wolfspeed, and others, Randolph County expects a 39.1% increase in demand for construction equipment operators over the next ten years. Nearly 120 area employers and industry representatives have expressed support for the project, including a pledge from Ace Avant to encourage its employees to seek instructor positions within the program. Golden LEAF funds will be used for simulators and supporting equipment, building renovations, personnel, professional development, and classroom support equipment and materials.
Rowan-Cabarrus Community College	\$1,250,000.00	CBGI	This award provides funding to Rowan-Cabarrus Community College (RCCC) to expand automotive technology pathway opportunities to its Cabarrus Business Technology Complex (CBTC) annex in Cabarrus County. RCCC, which has 5 campuses in Rowan and Cabarrus counties, currently offers Automotive Systems Technology at its North Campus in Rowan County. RCCC plans to renovate 5,039 sq. ft. at CBTC to create a facility that will support curriculum-based and continuing education certifications in the automotive technology pathway. Local employers report ongoing challenges filling vacancies for automotive positions. The project will prepare students with the necessary skills to meet the demands of the region's automotive workforce. RCCC anticipates that 12 additional students will be trained in the Automotive Systems Technology program and 137 continuing education students will receive On- Board Diagnostics Certification II and/or Auto Safety certifications annually. Golden LEAF funds will be used for personnel, construction, and equipment.
Rowan-Cabarrus Community College	\$975,000.00	CBGI	This award provides funding to Rowan-Cabarrus Community College (RCCC) to expand advanced manufacturing programs to its North Campus in Rowan County. RCCC, which has 5 campuses in Rowan and Cabarrus counties, currently offers advanced manufacturing at its Cabarrus County campus. Expanding advanced manufacturing training to Rowan County will help address the critical workforce needs in the region's growing manufacturing and logistics industries and address transportation barriers faced by students and workers trying to access training at the Cabarrus campus. The project will launch new courses such as forklift operator training, Certified Production Technician, and FESTO Industry 4.0 certifications. It will also support post-secondary opportunities for high school students enrolled in the new Global Logistics CTE pathway that the Rowan-Salisbury School System is establishing at Jesse Carson High School. RCCC anticipates that 26 students will complete at least one academic program annually, with 21 students receiving at least one industry 3rd party certification/credential. Golden LEAF funds will be used for personnel, equipment, professional development, and outreach and marketing.

Grantee	Award Amount	Golden LEAF Program	Purpose & Outcomes
Rowan-Salisbury School System	\$325,000.00	CBGI	This award provides funding to Rowan-Salisbury School System (RSSS) to start a Global Logistics CTE pathway at Jesse Carson High School. The Global Logistics program will enhance the school system's existing Advanced Manufacturing and Engineering pathways by offering new courses and certifications such as Introduction to Logistics (OSHA 10 and Rigging Trainer), Functional Areas in Logistics (Forklift simulator), and Global Logistics Management (Certified Logistics Technician). The certifications will be offered in partnership with Rowan-Cabarrus Community College which is expanding its advanced manufacturing programs to its North Campus in Rowan County. The Global Logistics CTE Pathway will directly address the need for skilled workers in transportation and logistics from local distribution centers. RSSS expects to enroll 108 students annually in the pathway by the 2027-28 school year. Of those enrolled, 50 are expected to complete the program by the 2027-28 school year, with 40 students receiving a third-party credential. It is expected that 60 students participating in the program will receive career day exposure to local employers. Golden LEAF funds will be used for equipment and associated professional development.
Rural Opportunity Institute	\$115,000.00	Open Grants	This award provides funding to the Health Education Foundation of Eastern North Carolina, Inc. to support the expansion of the Young Civic Leaders initiative which is managed by the Rural Opportunities Institute. This initiative enhances student engagement in work-based learning opportunities in public sector roles in Eastern North Carolina. There are many public sector positions available in the region, but limited awareness of them. The Town of Tarboro funded paid internships for the past two summers, and the objective of this award is to expand the initiative by establishing a pathway for students and youth aged 15 to 19 to access paid internship opportunities, mentorship, and career pathways within local governments, such as Edgecombe and Nash counties. The project aims to recruit 25 participants for the paid internship program. Golden LEAF funds will be used for staffing, mentors, and outreach/marketing. The award will also leverage matching funding from the Kate B. Reynolds Foundation.
Sallie B. Howard School of Arts and Science	\$120,986.00	Open Grants	This award provides funding to Sallie B. Howard School of Arts and Science, a K-12 charter school established in 1997, to enhance its Biotechnology Pathway. The biopharma industry is growing in Wilson County and is creating hundreds of high-paying jobs. This project will provide hands-on training to meet workforce requirements by introducing mammalian cell culture techniques. The project will include new lab modules, teacher training, and year-round lab activities starting in Fall 2025, facilitated by experienced biotechnology staff. It is expected that 75 students will complete a CTE pathway and 40 students will complete the BioWork Certification annually. Golden LEAF Funds will be used for supplies and materials, lab furniture and equipment, professional development, computer equipment, and upgraded technology.
South Piedmont Community College Foundation Inc	\$480,000.00	CBGI	This award provides funding to South Piedmont Community College Foundation, Inc. to support South Piedmont Community College's (SPCC) establishment of a BioWork certificate course at the Old Charlotte Highway campus located in Union County. SPCC is constructing a 21,000 square foot Aseptic Training Facility on this campus to support the growing biotech/life sciences industry. The 140-hour BioWork certificate course will provide students with an overview of bioprocess operations and instruction in safety, quality, math and measurement, manufacturing process technology, process control, and equipment usage. The course prepares students for work as process technicians in biotechnology, pharmaceutical, or chemical manufacturing facilities. SPCC will collaborate with educational institutions, industry partners, and NCBiotech to grow the region's biotech industry by preparing residents for in-demand, high-wage employment with local biotech companies. BioWork is a necessary component of biotechnology programs. The college expects to enroll 104 students annually in the BioWork certificate course. Golden LEAF funds will be used for personnel, equipment and supplies, and marketing.

Grantee	Award Amount	Golden LEAF Program	Purpose & Outcomes
South Piedmont Community College Foundation Inc	\$500,000.00	CBGI	This award provides funding to South Piedmont Community College Foundation, Inc. to support South Piedmont Community College's (SPCC) establishment of an HVAC-R training program in Anson County. SPCC will target high school students, traditional undergraduate students, and disconnected workers for enrollment in the program. For high school students, the college will provide programming at Anson High School and Anson Early College, housed at SPCC's Polk Campus. For traditional undergraduates, the college will offer afternoon and evening classes at its Polk Campus. For disconnected youth and workers, the college will partner with NCWorks to offer a short-term, multi-week training series up to three times per year. This project boasts strong collaboration with the local workforce development board and school district and with industry partners, who have confirmed significant local demand. Outcomes expected from the project include 50 curriculum program completers and 60 students earning third-party credentials annually. Golden LEAF funds will be used for personnel, equipment and supplies, instructional technology, outreach and marketing, professional development, and accreditation costs.
Stanly Community College Foundation, Inc.	\$750,000.00	CBGI	This award provides funding to Stanly Community College Foundation, Inc. to support Stanly Community College's (SCC) establishment of dual-enrollment pathways at Albemarle High School and South Stanly High School to meet regional demand for technology graduates. SCC will partner with Stanly County Schools (SCS) to strengthen the pipeline of high school students pursuing these career fields by creating an engineering technology dual-enrollment pathway at one local high school and an information technology dual-enrollment pathway at another local high school. Students at these high schools have the greatest transportation barriers to accessing existing programs. Students at other SCS high schools will also be able to enroll in these pathways. The program will offer career assessment software, mentoring, industry representative visits, specialized courses, field trips, and local pre-apprenticeship opportunities. Upon completion of these dual-enrollment pathways, students are expected to matriculate to a related AAS degree program at SCC and transition from a pre-apprenticeship to a registered apprenticeship program leading to full employment. SCC expects that 24 students will complete a career pathway in the funded area, 30 students will earn an industry/3rd party credential, and 15 students will participate in a work-based learning (pre-apprenticeship) opportunity annually. Golden LEAF funds will be used for equipment, supplies, initial personnel costs, software, travel/transportation, and student certification/testing costs.
Stanly Community College Foundation, Inc.	\$250,000.00	Open Grants	This award provides funding to support the expansion of the CNC machining program at Stanly Community College (SCC) in response to the growing need for CNC machinists in the County. SCC is constructing a 32,000 sq. ft. trades facility which is scheduled to be complete in December 2024, and has dedicated 7,155 sq. ft. of classroom and lab space in this new facility to the machining program. This will triple the space available for machining and accommodate six pieces of equipment required to expand capacity from 12 students to 20 per cohort for CNC machining and from 12 to 16 for manual machining. SCC will develop continuing education courses to create opportunities for employers to upskill their existing workforce. Golden LEAF funds will be used to purchase two CNC machines.

Agriculture

Golden LEAF supports agriculture as an economic engine in rural communities. Projects include education or training opportunities to enable transition to a career in agriculture or technical assistance and research projects to support existing farmers. Eligible uses of Golden LEAF funds include salary, equipment, and other program costs.

Grantee	Award Amount	Golden LEAF Program	Purpose & Outcomes
Eastern North Carolina Food Commercialization Center (ENC FCC)	\$500,000.00	Open Grants	This award provides funding to the Eastern North Carolina Food Commercialization Center (ENCFCC) to support the acquisition of processing equipment for its value-added food production center in Ayden, North Carolina. Construction of the facility will be complete in Fall 2024. The project is expected to create at least 20 jobs at the facility. ENCFCC has letters from an initial group of farmers outlining their intention to sell produce to the facility which will process the produce using the equipment to be purchased with Golden LEAF funds. ENCFCC anticipates the acreage and number of participating farmers will increase rapidly by Spring 2025. ENCFCC is expected to draw farmers from surrounding counties and will be sustained through operating revenue. Golden LEAF funds will be used for equipment.
Union County Government	\$1,000,000.00	CBGI	To support the new Union County Food Innovation Center and expanded Food Hub. The Food Innovation Center will serve as an economic development engine that will fill a current gap in the regional food system that supports farmers and producers. The center will provide additional marketplaces to sell goods, opportunities to create value-added products, and educational training and activities. The Food Hub, which will be relocated to the site of the Food Innovation Center, will shift toward servicing larger wholesale accounts, food service providers, and production companies while simultaneously serving small farmers and producers and increasing public access to local food. These efforts will solidify the Food Hub's role as a central, sustainable food distribution network within the region. The Food Hub serves 30-35 agricultural producers in its current facility and the projected number of producers to be served in the expanded Food Hub is 100-105. Golden LEAF funds will be used for kitchen equipment and coolers and freezers at the Food Hub.

Special Initiatives

Golden LEAF Schools

Golden LEAF Schools Initiative is a \$25 million dollar funding commitment over five years to strengthen middle school math instruction and career development in rural and economically distressed communities across North Carolina. It was launched in January 2025 as a partnership with the N.C. Department of Public Instruction.

The fifteen selected schools are divided into two cohorts: the Transformative Schools Cohort (TS) and the Personalized, Competency-Based Education Cohort (PCBE). The initiative emphasizes collaboration within each cohort, aiming to foster long-term educational improvements and workforce development across the state.

The TS Cohort will receive comprehensive support focused on improving schools through implementation of the Marzano High Reliability Schools (HRS) Framework and the Open Up Resources Problem-Based Math Curriculum. Schools included in this cohort are:

- Bertie Middle School, Bertie County Schools
- Carver Middle School, Scotland County Schools
- Contentnea-Savannah K-8 School, Lenoir County Public Schools
- East Alexander Middle School, Alexander County Schools
- East Rutherford Middle School, Rutherford County Schools
- Harnett Central Middle School, Harnett County Schools
- Northern Middle School, Person County Schools

- Union Middle School, Sampson County Schools
- Warren County Middle School, Warren County Schools
- West Lee Middle School, Lee County Schools

The PCBE Cohort focuses on instructional transformation and assists schools with demonstrated readiness to begin a shift towards Competency-Based Education (CBE). Schools included in this cohort are:

- Dunn Middle School, Harnett County Schools
- Hayesville Middle School, Clay County Schools
- Swain County Middle School, Swain County Schools
- SanLee Middle School, Lee County Schools
- Waynesville Middle School, Haywood County Schools

The selected schools went through a rigorous application and evaluation process, including an interview with key stakeholders such as the district superintendent, school principal and district office curriculum and instruction leaders.

The initiative is underway beginning fall 2025. Future reports will include information on the status of this initiative.

Methodist University Cape Fear Valley Health School of Medicine

Recognizing the need to increase the supply of doctors in rural communities, Golden LEAF awarded \$8 million in August 2024 to Methodist University for costs related to the new Methodist University Cape Fear Valley Health School of Medicine. The School is expected to create 260 new jobs. At full enrollment, the School will graduate 120 doctors each year, many of whom are expected to enter residencies across seven Tier 1 counties and one Tier 2 county throughout Southeastern North Carolina and remain and practice in the region, creating additional jobs and addressing severe healthcare shortages.

It is expected that 60 graduates annually will complete residencies in the Cape Fear Valley Health System, which serves Bladen, Columbus, Cumberland, Harnett, Hoke, Robeson, Sampson, and Scotland Counties. These counties have some of the worst health outcomes in the state. After completing their residencies, 40 doctors are expected to stay and practice in the region each year, creating additional jobs and providing much needed health care in Eastern North Carolina. Golden LEAF funding will be used for instructional equipment for the new medical school building.

NC Ag Leads Strategic Plan

The Golden LEAF Foundation Board awarded \$1 million in November 2023 to the North Carolina Chamber Foundation to facilitate a stakeholder engagement process to identify priority issues affecting agriculture in North Carolina and to develop a strategic plan to address those issues prioritized during the process.

The strategic planning process was led by the NC Chamber Foundation, and developed in partnership with Golden LEAF and NC Farm Bureau. This effort was directed by a distinguished Steering Committee composed of NC's top agriculture leaders, including Agriculture Commissioner Steve Troxler.

The NC Ag Leads Strategic Plan was released in May 2025, and will serve as a blueprint to guide action, ensuring North Carolina will continue to lead the nation in agriculture innovation, resilience, and prosperity. In 2025, Golden LEAF provided an additional \$225,000 to the NC Chamber Foundation to continue the work of NC Ag Leads. Next steps include implementation of the strategic plan with support from stakeholders and partners. For more information visit: <https://www.ncagricultureleads.com/>

Hurricane Helene Relief Initiative

In October, the Golden LEAF Board established a Hurricane Helene Relief initiative. Funds are available to organizations to support immediate relief for individuals and families including home repair and addressing unmet needs. Governmental entities and 501(c)(3) nonprofits are eligible to apply. So far, the Golden LEAF Board has awarded \$4,997,654 to support 14 Hurricane Helene Relief projects serving the region. This list includes both recognized VOADS (Volunteer Organizations Active in Disasters) and local nonprofits. Grantees provide reports on outcomes including the number of households served and homes repaired.

Entire Disaster Region

- \$2,940,000 to the North Carolina Baptist Men to support a range of needs including upfit of buildings owned by the Baptists on Mission for volunteers to stay, vehicles, contractors, tools, equipment, and staffing for rebuild sites.
- \$650,000 to Catholic Charities Diocese of Charlotte for six case management and related positions and for replacement personal property for survivors of Hurricane Helene.
- \$225,000 to Legal Aid of North Carolina, Inc. for salaries/benefits and direct onboarding expenses for four case coordinators to respond to needs resulting from Hurricane Helene.
- \$175,000 to the Western North Carolina Annual Conferences of the United Methodist for tools and equipment necessary to support home repair efforts, and for other costs to assist survivors.
- \$155,000 to Carolina Farm Stewardship Association for personnel, travel, and training expenses to provide technical assistance to farmers in Hurricane Helene impacted communities to help them access disaster relief programs.
- \$75,000 to the North Carolina Coalition Against Domestic Violence for shelter/personal items, providing access to shelter, and mileage.

Regional Projects

- \$100,000 to Camp Grier in McDowell County for staff salaries, utilities, food/meal expenses to allow the camp to continue to support recovery in the community.
- \$60,000 to Centro Unido Latino Americano in McDowell County for rental assistance, utility assistance, replacement personal property, and case management to support survivors of Hurricane Helene.
- \$60,000 to Hola Carolina in Henderson County for rental assistance, utility assistance, replacement personal property, and case management of survivors of Hurricane Helene.
- \$107,654 to Hospitality House of Northwest North Carolina in Watauga County for case management, utility assistance, and housing assistance for survivors of Hurricane Helene.
- \$100,000 to Rutherford Housing Partnership in Rutherford County for home repair and costs for construction of a mobile shower/laundry unit.
- \$100,000 to the Housing Assistance Corporation in Henderson County for home repair expenses and case management for projects in Henderson, Transylvania, and Polk counties.
- \$100,000 to Transylvania Habitat for Humanity in Transylvania County for salary and related expenses to employ a carpenter to complete disaster-related repairs.
- \$150,000 to WAMY Community Action in Watauga County for home repair, housing assistance, utility assistance, replacement personal property, case management, tools and equipment.

Golden LEAF Scholarships

Since 2000, Golden LEAF has made 83 scholarship awards totaling \$88,492,725 to assist more than 33,000 students from rural counties to attend two- and four-year colleges and universities in North Carolina. Scholarships target students who (1) reside in rural North Carolina counties that are designated economically distressed, (2) who demonstrate financial need, and (3) who show an interest in staying in a rural North Carolina county after graduation. Recipients may attend the participating North Carolina college or university of their choice.

Colleges and Universities

The North Carolina State Education Assistance Authority is the manager of the Golden LEAF scholarship program for colleges and universities. Golden LEAF awarded \$3,116,173 to support 215 new and 620 renewal scholarships for students to attend public and private universities and colleges in North Carolina. Each scholarship is valued at \$3,500 per year.

Golden LEAF Scholarship recipients enrolled in colleges and universities are eligible to participate in the Golden LEAF Rural Internship Initiative. These internships provide students with work experience in rural communities. The goal of the program is to prepare the next generation of rural leaders and expose students to career opportunities in rural communities. Golden LEAF administers this program through contracts with Spiron Solutions, who oversees application review and evaluation, and a payroll processing company.

Community Colleges

The Foundation awarded \$3,000,000.00 to the North Carolina Community College System to support at least 3,500 new scholarships for students from rural counties enrolled in the curriculum and continuing education programs at a participating community college. The scholarship provides up to \$2,250 per year to students in curriculum programs and up to \$1,850 per year to students in continuing education programs. Funds can be used for tuition and other costs of attendance.

Golden LEAF Foundation Annual Report

Planned Activities and Goals

Performance on FY 2025-2026 Goals

1. Provide funding for economic development projects across North Carolina that create jobs and add investment.

✓ The Golden LEAF Foundation Board of Directors awarded \$116,016,733.22 to support 67 projects across 43 counties to enable implementation of agricultural, workforce preparedness, job creation and economic investment, and scholarship initiatives. Funds awarded through the Economic Catalyst Program are projected to support the creation of an estimated 14,760 jobs and capital investment of more than \$5.7 billion over the next few years.

2. Close-out many of the grants awarded to aid local governments and small businesses affected by natural disasters.

✓ Following Hurricane Matthew, Hurricane Florence, and Hurricane Dorian, the Disaster Recovery Acts of 2016, 2017, 2018 and 2019 appropriated a total of \$114.5 million to the Golden LEAF Foundation for repair or replacement of equipment and infrastructure damaged or destroyed as a result of one or more of the recent named storms, as well as to provide loans for small business recovery. With the exception of a small amount of funding held to address project modifications, all available funds have been awarded to support 215 projects. As of this report, 197 projects are complete.

3. Complete Southwest Prosperity Zone capacity building and grantmaking through the Community-Based Grants Initiative.

✓ Capacity building efforts concluded in the fall of 2024 with grantees submitting applications for projects. Applications were reviewed and grants awarded by the Golden LEAF Foundation Board at its February 2025 meeting.

4. Continue implementation of FY2022-2026 strategic plan, including celebrating the 25th anniversary of the Golden LEAF Foundation.

✓ The Golden LEAF Foundation Board of Directors adopted a FY2022-2026 strategic plan in February of 2021. The goal of the strategic planning process was to assess how Golden LEAF can increase the impact of its mission through implementation of programs that support outcomes in key priority areas. As a result of the strategic plan, the SITE Program was launched in FY22. In FY25, the Board continued development of new programs responsive to issues identified in the strategic plan including further pursuing NC Ag Leads, a strategic plan for agriculture in North Carolina.

Planned Activities and Goals for FY 2025-2026

1. Provide funding for economic development projects across North Carolina that create jobs and add investment.

2. Close-out many of the grants awarded to aid local governments and small businesses affected by natural disasters.

3. Complete North Central Prosperity Zone capacity building and grantmaking through the Community-Based Grants Initiative.

4. Continue implementation of FY2022-2026 strategic plan.

Golden LEAF Foundation
Annual Report of Foundation Activities
July 1, 2024 - June 30, 2025

Appendix

Funds Received by Golden LEAF
Prior Five Years

(in millions)	MSA Payments	Investment Income	Total Income
FY 2020	\$17.5	\$2	\$45*
FY 2021	\$17.5	\$290	\$385*
FY 2022	\$17.5	<\$159>	<\$116>*
FY 2023	\$17.5	\$108	\$138
FY 2024	\$25	\$160	\$200*
FY 2025	\$25	\$178	\$260*
Cumulative	\$1,289	\$1,319	\$2,917

*Includes state general fund appropriations for disaster recovery, COVID-19 recovery, flood mitigation, shell building pilot program, and food distribution assistance program.

Active Golden LEAF Foundation Programs

Overview

Open Grants Program

Up to \$500,000 in funding available year-round to local governments and 501(c)(3) nonprofit organizations. Program places priority on agriculture, job creation and retention and workforce preparedness.

Economic Catalyst

Focuses on job creation and retention projects associated with business locations or expansions that are at risk without Golden LEAF participation. Specific criteria include urgent need, eligible use of funds, and economic impact of the project (jobs and capital investment).

SITE Program

Golden LEAF recognizes that rural and economically distressed communities must have sites available for development to attract new businesses and create opportunities for existing businesses to expand. Through this program, Golden LEAF will provide support to communities to identify potential sites for economic development, enable completion of due diligence on sites already identified, or to extend public utilities to or conduct rough grading and clearing of sites for which due diligence has been completed.

Community-Based Grants Initiative (CBGI)

Golden LEAF invites participation from counties in one prosperity zone each year. CBGI awards are limited to three projects per county, totaling no more than \$1,500,000 per county. This program is a competitive process and not all counties in a region receive funds in support of their projects.

Scholarships

Colleges and Universities Scholarship Program

The Golden LEAF Scholarship Program assists current high school seniors and North Carolina community college transfer students. Recipients must be from certain rural counties, demonstrate both financial need and merit, and plan to attend participating North Carolina colleges and universities. Scholarships for students attending colleges and universities of \$3,500 each are funded through a grant to the North Carolina State Education Assistance Authority. Students awarded Golden LEAF Scholarships attending colleges and universities are also eligible to participate in the Golden LEAF Rural Internship Initiative. The initiative provides Golden LEAF Scholars a paid internship in rural communities.

Community College Scholarship Program

The Golden LEAF Community College Scholarship Program supports students from certain rural counties to attend a participating community college. The scholarship provides students with up to \$2,250 per year to students in curriculum programs and up to \$1,850 per year to students in continuing education programs. Funds can be used for tuition and other components of the total cost of attendance.

Active Golden LEAF Foundation Programs

Priority Goals and Outcomes Tracked

Job Creation and Economic Investment

Collaborate with EDPNC, N.C. Department of Commerce, and local governments and organizations to provide gap funding to assist with job creation. Support healthcare as an economic development engine in rural and economically distressed areas of North Carolina.

- Investment in publicly owned infrastructure
- Investment in privately owned property, plant, and equipment
- New full-time jobs created
- Average annual wage of new full-time jobs
- Business start-ups
- New housing units

Golden LEAF will also collect information regarding jobs retained that were at risk without Golden LEAF support; comparison to county wages; job creation in identified job sectors; etc.

Workforce Preparedness

Increase the number of qualified individuals with skills aligned with current and future needs of North Carolina businesses. Prepare students with the technical and life skills necessary to enter work.

- Increase in students earning at least one academic credential (curriculum diploma, certificate, or associate degree/con ed certificate) in the area funded.
- Increase in students earning at least one industry/third party certification, license, or other credential (nonacademic) in the area funded.
- Increase in high school students completing CTE pathways in the area funded.
- Increase in secondary or post-secondary students participating in work-based learning.
- Increase in secondary students receiving meaningful exposure and opportunities to explore local career opportunities.

Golden LEAF will also collect information regarding students employed; incumbent workers trained; employer input and feedback; survey results; etc.

Agriculture

Support agriculture as a means of promoting economic development.

- Number of participants at agricultural training
- Publication of research outcomes directed towards benefit of farmers
- Monthly use of agricultural facilities that benefit farmers
- As well as narrative outcomes including: jobs, revenue growth, new agricultural business formations, economic output, changes in agricultural practices; acres in production; new crops/products grown or produced; and other measures of agriculture projects

Golden LEAF will also collect information regarding increased revenues; acres in production; new crops/products grown or produced; etc

Community Capacity, Competitiveness, and Vitality

Golden LEAF awards funds to invest in improving economic competitiveness. Outcomes for these projects are set by the Board of Directors and may be unique to each project.

Golden LEAF Foundation Awards

Program (years active)	Number	Amount
Open Grants (2000 - present)	966	\$170,840,568.23
Community-Based Grants Initiative (2013 - present)	209	\$130,522,514.22
Economic Catalyst (2005- present)	154	\$381,660,340.44
Scholarships (2000 - present)	83	\$88,492,725.00
SITE Program (2021 - present)	64	\$31,151,121.69
Special Initiatives (2000 - present)	446	\$444,401,300.39
Total	1,922	\$1,247,068,569.94

*Numbers do not include awards made and then rescinded with no funds released. Funds awarded for projects in the disaster recovery grant program or for the COVID-19 loan program, whether Golden LEAF or CARES Act funding, are not reflected.

*Numbers do not include awards made and then rescinded with no funds released.

Golden LEAF Foundation Awards

FY2000 - 2025 by County

County	Number of Projects FY2000 - 2025	Amount Awarded FY 2000 - 2025
Alamance	14	\$5,232,855.96
Alexander	6	\$2,952,560.54
Alleghany	8	\$2,757,573.00
Anson	16	\$5,297,218.60
Ashe	10	\$3,734,074.84
Avery	1	\$739,581.67
Beaufort	31	\$8,291,944.07
Bertie	10	\$2,263,025.00
Bladen	20	\$5,653,879.89
Brunswick	11	\$5,382,199.78
Buncombe	44	\$19,549,187.57
Burke	18	\$6,394,715.67
Cabarrus	5	\$967,179.75
Caldwell	14	\$4,524,895.86
Camden	3	\$2,239,100.00
Carteret	13	\$2,995,622.69
Caswell	9	\$3,501,245.21
Catawba	29	\$7,541,819.52
Chatham	14	\$15,661,198.45
Cherokee	16	\$6,455,594.18
Chowan	6	\$1,400,748.02
Clay	6	\$2,105,571.00

County	Number of Projects FY2000 - 2025	Amount Awarded FY 2000 - 2025
Cleveland	23	\$12,615,780.29
Columbus	21	\$6,728,067.27
Craven	13	\$6,523,270.04
Cumberland	21	\$14,798,716.51
Currituck	0	\$0
Dare	4	\$479,441.10
Davidson	15	\$6,180,716.51
Davie	7	\$6,255,362.13
Duplin	24	\$8,303,872.83
Durham	52	\$61,098,831.56
Edgecombe	46	\$19,031,189.68
Forsyth	34	\$11,487,364.83
Franklin	5	\$1,970,072.49
Gaston	9	\$5,067,611.65
Gates	3	\$1,040,424.03
Graham	10	\$3,141,480.81
Granville	10	\$1,930,332.85
Greene	18	\$4,469,385.65
Guilford	39	\$89,815,024.86
Halifax	27	\$5,406,505.01
Harnett	12	\$5,149,802.78
Haywood	14	\$5,435,032.77
Henderson	14	\$5,656,199.86
Hertford	12	\$3,962,900.01
Hoke	6	\$4,578,518.65
Hyde	9	\$2,728,464.84
Iredell	6	\$2,397,243.41
Jackson	26	\$8,625,776.84
Johnston	29	\$9,779,510.88
Jones	20	\$9,705,601.98
Lee	15	\$62,258,172.61
Lenoir	31	\$115,775,507.21
Lincoln	1	\$200,000.00
Macon	2	\$564,556.49
Madison	16	\$5,327,731.48
Martin	20	\$5,128,647.81

County	Number of Projects FY2000 - 2025	Amount Awarded FY 2000 - 2025
McDowell	10	\$6,040,282.21
Mecklenburg	1	\$93,906.52
Mitchell	18	\$4,917,043.60
Montgomery	18	\$7,319,175.00
Moore	10	\$2,438,420.82
Nash	28	\$9,031,263.51
New Hanover	10	\$2,120,573.96
Northampton	14	\$4,794,725.53
Onslow	11	\$2,855,142.17
Orange	65	\$19,670,496.88
Out of State	3	\$1,622,041.34
Pamlico	4	\$1,811,651.34
Pasquotank	30	\$10,239,294.37
Pender	8	\$3,431,640.40
Perquimans	5	\$2,530,709.72
Person	9	\$2,898,294.37
Pitt	65	\$31,851,362.63
Polk	1	\$400,000.00
Randolph	18	\$6,080,801.84
Richmond	13	\$5,949,452.35
Robeson	37	\$13,815,293.25
Rockingham	26	\$11,790,070.34
Rowan	10	\$5,190,988.05
Rutherford	14	\$6,406,271.00
Sampson	15	\$4,482,783.28
Scotland	11	\$6,796,507.00
Stanly	18	\$6,724,914.34
Stokes	6	\$2,713,883.50
Surry	35	\$10,524,814.30
Swain	5	\$3,446,820.53
Transylvania	7	\$3,298,343.04
Tyrrell	7	\$2,719,430.90
Union	2	\$1,280,000.00
Vance	22	\$5,122,476.62
Wake	296	\$280,855,922.06
Warren	8	\$2,387,527.59

County	Number of Projects FY2000 - 2025	Amount Awarded FY 2000 - 2025
Washington	15	\$3,860,825.14
Watauga	18	\$3,270,075.88
Wayne	21	\$8,019,511.45
Wilkes	25	\$9,797,033.29
Wilson	30	\$22,696,812.66
Yadkin	9	\$1,460,321.50
Yancey	10	\$2,901,398.79

1. Awards reflect the county where the applicant is based which may not be where the project is located.
2. Awards to entities based in Durham, Orange or Wake to support projects throughout the state are included.
3. Awards to entities based in Durham, Guilford, Wake and Orange for administration of the Golden LEAF Scholarships and Golden LEAF Scholars Leadership Program are included.
4. Lenoir County includes \$97,441,121 awarded to the N.C. Global TransPark Authority for Project "Marco Polo" involving Spirit AeroSystems.
5. Hurricane Florence disaster relief, disaster recovery, and flood mitigation projects are not reflected. Hurricane Helene relief funds are included.
6. Funding for the N.C. COVID-19 Loan Program is not included.



Shell Building Pilot Program

Overview

The North Carolina General Assembly appropriated \$10 million to the Golden LEAF Foundation to implement the Golden LEAF Shell Building Pilot Program (Section 11.7 of S.L. 2023-134). Under the authorizing legislation, governmental and charitable nonprofit entities in Ashe, Bladen, Columbus, Franklin, Halifax, Robeson, and Scotland counties are eligible to apply for funding. The program is intended to provide grants to increase the number of available, publicly-owned industrial buildings suitable for new or expanding businesses, other than retail, entertainment, or sports projects.

A shell building is defined as an industrial building, newly constructed, not previously occupied, without a known or intended occupant, that is designed to accommodate a future owner or tenant. Golden LEAF established the following minimum building requirements: 30,000 square feet, 30' ceiling height, gravel floor, presence of water, sewer, and electrical service at or in the immediate vicinity of the site in quantities that are reasonable in relation to expected uses of the proposed building, graded gravel parking lot

Applicants could request a modification to these requirements as long as the applicant could demonstrate demand in or near the applicant's community for the modification (examples include smaller building, lower ceiling). Applicants may use funds to provide a more "finished" product such as cement floors.

Reporting

Section 11.7.(b) of S.L.2023-134 outlines the reporting requirements for the Program as follows: the number of shell buildings built, the number of shell buildings that remain vacant and the length of time they have been vacant, the number of shell buildings that have been occupied and the name of the company that occupied them, and the number of jobs based in the shell buildings that have been occupied.

Terminated Projects

Golden LEAF initially awarded funds for seven projects to seven grantees: Ashe County, Bladen's Bloomin' Agri-Industrial Inc., Franklin County, Halifax County, Robeson County, Scotland County EDC, and Tabor City.

Two have been terminated at the request of the recipient due to a lack of sufficient funding or resources. See below for additional information. Halifax County has also indicated it intends to terminate its award because another economic development project has indicated it will locate on the site for which the shell building was planned.

- Bladen's Bloomin' Agri-Industrial Inc. requested to terminate its award in November 2024 due to a lack of sufficient funding to construct the apron, water, and sewer infrastructure at the project site.
- Franklin County requested to terminate its award in October 2024 due to a lack of resources and evaluation of existing capital projects.

Funding Status

Funds were awarded in two stages. See details regarding phase 1 awards in the prior activity section of this report. Grantees received initial awards to complete planning and design and a second award to support construction expenses. Award amounts varied due a variety of factors (amount of engineering required, etc.) and reflect amounts requested by grantees necessary to complete the proposed scope of work. Each grantee also identified strategies to prepare their shell building for future expansion (a common strategy to ensure appeal to a wider range of potential end users).

County	Grantee	Total Award Amount	Amount Disbursed	Scope of Work (Size of Proposed Shell Building)
Ashe	Ashe County	\$1,425,000	\$40,000	15,000 square feet, expandable to 40k
Columbus	Tabor City	\$1,425,000	\$604,800	25,000 square feet, expandable to 50k
Halifax	Halifax County	\$1,425,000	\$27,000	---
Robeson	Robeson County	\$1,425,000	\$9,600	80,000 square feet, expandable to 142k
Scotland	Scotland County Economic Development Corporation	\$1,400,000	\$190,718.75	45,000 square feet, expandable to 60k
	Total	\$7,100,000		

Bladen's Bloomin' Agri-Industrial Inc. was awarded a total of \$1,400,000. A total of \$30,063 was released. Franklin County was awarded a total of \$1,425,000. A total of \$50,000 was released.

Current Project Status

At the time the project was awarded funding, the grantee provided a timeline of when they expected to complete specific activities, including: completion of engineering and design, start of construction, and completion of construction. The initial date the grantees provided is referred to as the "target date".

Every six months, the grantee provides Golden LEAF with a summary of what activities have been completed, allowing Golden LEAF staff to compare their progress to the target date. Below is a summary of the accomplishments for each active project as of August 2025.

Grantee	Status	Completion of Engineering and Design	Start of Construction	Completion of Construction
Ashe County	Slight delay (<6 months)	Target: 8/31/2025	Target: 11/10/2025	Target: 10/1/2026
Halifax County*	Not Moving Forward	n/a	n/a	n/a
Robeson County	On Track	Target: 9/10/2025	Target: 10/22/2025	Target: 10/22/2026

Grantee	Status	Completion of Engineering and Design	Start of Construction	Completion of Construction
Scotland County Economic Development Corporation	On Track	Not applicable (design/build)	Completed: 4/1/2025	Target: 3/1/2026
Tabor City	On Track	Completed: 2/28/2025	Completed: 6/16/2025	Target 8/1/2026

*Halifax County has indicated that they are not going to move forward because they have identified another economic development project for the planned building site.

Reallocation of Remaining Funding

As a result of the termination of projects, additional funding is available for the remaining grantees. The Golden LEAF Foundation Board of Directors approved a process to reallocate those funds. This process prioritizes reducing unanticipated costs that grantees will have if bids are higher than previously reviewed opinions of probable cost and allows Golden LEAF to increase awards to grantees even though projects are in different stages of implementation.

Golden LEAF Staff expects that the current grantees will submit project modifications no later than the December 2025 board meeting.

Anticipated Outcomes

Golden LEAF asked applicants to estimate the following outcomes for their projects: Investment in Privately Owned Property, Plant, and Equipment, New Full-time Jobs Created, and Average Annual Wage of New Full-time Jobs. Golden LEAF will also track Investment in Publicly Owned Infrastructure, determined by the total cost of the project that makes the shell building viable. This includes necessary water, sewer, and road extensions and related infrastructure needs. These outcomes are aligned with the outcomes Golden LEAF tracks for other similar projects.

Outcome	Defined As	Source
Investment in Publicly Owned Infrastructure	Total dollars to be spent to construct the building and associated infrastructure needs, including grant funds	Invoices and other records provided by grantee
Investment in Privately Owned Property, Plant, and Equipment	Total private dollars invested at the project location	Documentation from companies occupying the shell building or tax records
New Full-Time Jobs Created	Number of new full-time jobs created within the shell building	Report from the company
Average Annual Wage of New Full-time Jobs	Wages paid to employees located within the shell building	Report from the company

Each grantee developed anticipated outcomes based on factors such as the size of the building, the location of the building, the kinds of industries thought to be most likely to select the building based on review of data about demand for industrial buildings in the area, and the grantee's economic development strategy.

After the buildings are complete, Golden LEAF will begin tracking the grantee's progress towards these outcomes. Each project's projected outcomes are described in more detail below, including the anticipated sources of data to be provided by each grantee. Golden LEAF will report on the information required to be provided to the General Assembly, i.e., the number of shell buildings built, the number of buildings that are vacant and how long they have been vacant, the number of shell buildings that have been occupied, the name of the company that occupied the building, and the number of jobs based on the shell buildings that have been occupied. Grantees will report to Golden LEAF on an annual basis once the buildings are constructed.

Grantee	Anticipated Completion of Construction*	Target Investment in Publicly Owned Infrastructure	Target Investment in Privately Owned Property, Plant, and Equipment	Target New Full-Time Jobs Created	Target Average Annual Wage of New Full-time Jobs
County of Ashe	12-31-26	\$2,851,261.50	\$3,000,000.00	30	\$42,900
Town of Tabor City	3-31-26	\$2,430,900.00	\$750,000.00	20	\$55,000
County of Robeson	12-31-25	\$9,898,895.00	\$9,152,000.00	75	\$45,500
Scotland County Economic Development Corporation	12-31-25	\$2,367,642.00	\$1,500,000.00	25	\$45,116

*Initial estimates. Timelines vary due to the amount of work to be completed at each site and availability of sufficient funds to begin construction.

Status of the Shell Buildings

Grantee	Number of shell buildings built	Name of occupying company or vacant	Length of time the building has been vacant	The number of jobs created
Ashe County	0	n/a	n/a	n/a
Robeson County	0	n/a	n/a	n/a
Scotland County Economic Development Corporation	0	n/a	n/a	n/a
Tabor City	0	n/a	n/a	n/a
Total	0	n/a	n/a	n/a

Prior Activity

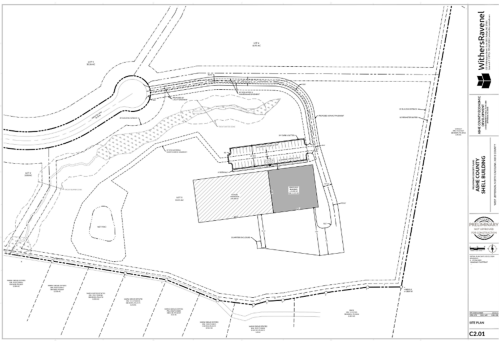
In February 2024, the Golden LEAF Foundation Board of Directors awarded \$360,500 in funding for eight projects through the first phase of the Shell Building Pilot Program. Funds were used to enable completion of preliminary designs and due diligence for shell buildings.

Award amounts varied due a variety of factors (amount of engineering required, etc.) and reflect amounts requested by grantees necessary to complete the proposed scope of work

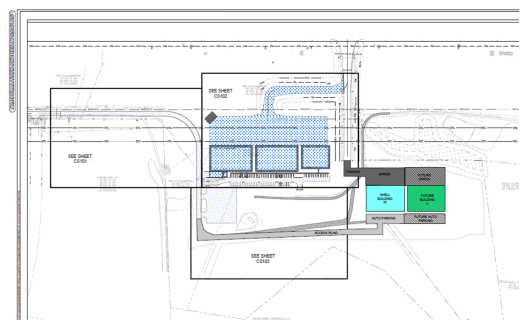
Columbus County determined after the award to collaborate with Tabor City on the Tabor City project. Both Tabor City and Columbus County are now anticipated to provide supplemental funding for the Tabor City Shell Building. The original award to Columbus County was rescinded with no dollars released.

County	Grantee	Award Amount	Use of Funds
Ashe	County of Ashe	\$40,000	To develop a preliminary design plan to construct a 15,000 square-foot shell building at the Ashe County Industrial Park.
Bladen	Bladen's Bloomin' Agri-Industrial, Inc.	\$50,000	To develop a preliminary design plan to construct an approximately 20,000-30,000 square-foot shell building located in the Aviation Park contiguous to the Elizabethtown airport.
Columbus	Columbus County	\$50,000	To develop a preliminary design plan to construct a 50,000 square-foot shell building (expandable to 100,000 square feet) located at the Southeast Regional Park. Grantee chose to request the award be rescinded and \$0 was spent.
Columbus	Town of Tabor City	\$43,500	To develop a preliminary design plan and a geotechnical report to construct a 24,000 square-foot shell building at the Tabor City Industrial Park.
Franklin	County of Franklin	\$50,000	To develop a preliminary design plan to construct a 30,000 square-foot shell building expandable to 60,000-90,000 square-feet at the Triangle North Franklin Business Park, Lot 5.
Halifax	County of Halifax	\$27,000	To develop a preliminary design plan to construct a 40,000-50,000 square-foot shell building at the Halifax Corporate Park.
Robeson	County of Robeson	\$50,000	To develop a preliminary design plan to construct a 140,000 square-foot shell building at the COMtech Business Park.
Scotland	Scotland County Economic Development Corporation	\$50,000	To develop a preliminary design plan to construct a 25,000-30,000 square-foot shell building at the SCEDC Incubator Park.

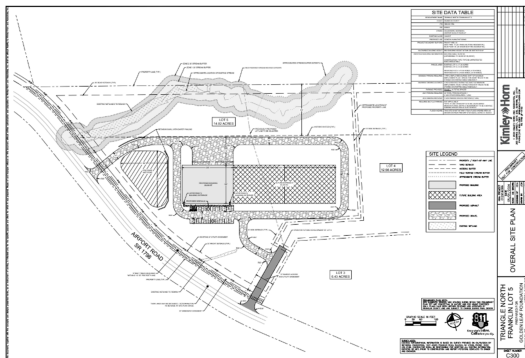
Preliminary Designs



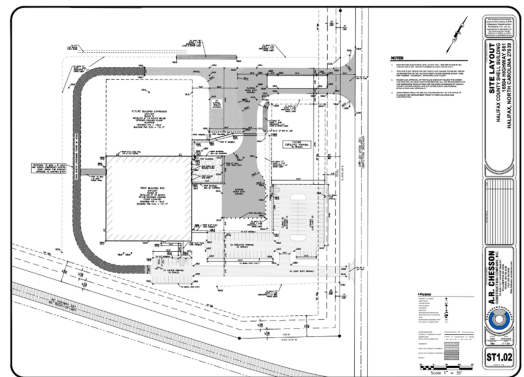
County of Ashe



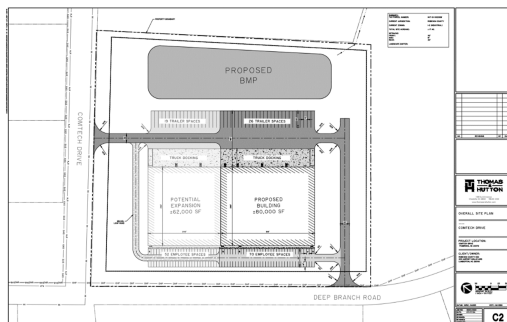
Bladen's Bloomin' Agri-Industrial, Inc.



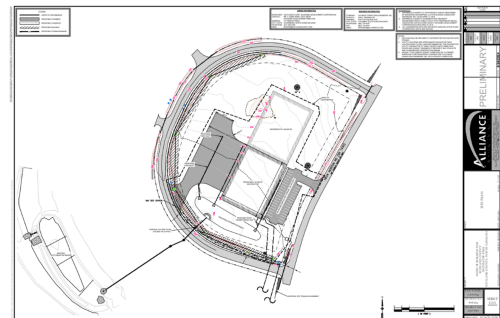
County of Franklin



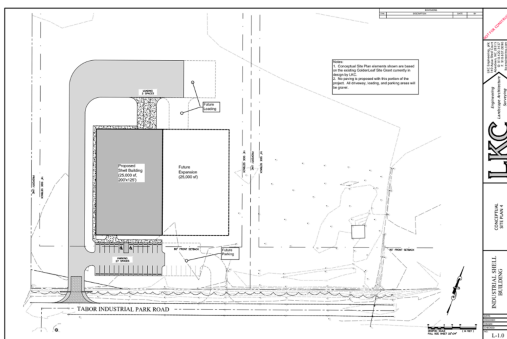
County of Halifax



County of Robeson



Scotland County Economic Development Corporation



Town of Tabor City

The Golden LEAF, Inc.
FY2026 Budget

	Budget FY 2026
Budget Sources:	
MSA Payment (Appropriated)	\$ 25,000,000
Flood Mitigation Program	208,733
Disaster Recovery Program	1,361,460
Food Distribution Assistance Program	471,423
Shell Building Program	2,782,418
Budget Carryforward (awarded in FY25)	60,000,000 **
Corpus	46,803,762
Total Budget Sources	<u>\$ 136,627,796</u>
Administration/Capital	\$ 5,273,762
Interest Expense and Fees (LOC)	80,000
Investment in Corpus	7,500,000
Grants/Programs:	
Open Grants Program	8,000,000
Economic Catalyst	10,000,000
Community Based Grantsmaking	11,000,000
Site Development Program	6,000,000
Scholarships	7,000,000
Other Initiatives:	
SPARC Projects	3,000,000
NC Ag Leads Implementation	4,500,000
Golden LEAF Schools Follow On	450,000
Healthcare Leverage	7,000,000
Hurricane Helene Relief	2,000,000
Other	60,000,000 **
Disaster Recovery Grant Program	1,361,460
Flood Mitigation (State Appropriated in FY22)	208,733
Food Distribution (State Appropriated in FY23)	471,423
Shell Building (State Appropriated in FY24)	2,782,418
Total Grants	<u>123,774,034</u>
Total Budget	<u>\$ 136,627,796</u>
Corpus as a % of 3-yr rolling avg. of Net Assets	<u>4.35%</u>
Admin/Capital as % of Total Budget*	<u>4.28%</u>
Admin/Capital + Interest Exp as % of Total Budget*	<u>4.34%</u>

*Excludes Food Distribution grant as legislation includes an administrative allotment for administration of the Program

** Note: carryforward of large project awarded in June 2025 (due to accounting rules)

The Golden LEAF, Inc.
FY2026 Administrative Expenses/Capital Budget

	Budget FY2026
Administrative Expense	
Board of Directors Expenses	\$ 78,474
Depreciation Expense	120,000
Insurance	42,886
Miscellaneous & Bank Charges	6,000
Occupancy Expenses	99,309
Office Operations Expenses	40,156
Personnel Expenses	3,991,374
Professional Fees	674,805
Technology	199,208
Total Administrative Expense	\$ 5,252,212
Total Capital Budget	\$ 21,550
	\$ 5,273,762

**The Golden L.E.A.F.
(Long-term Economic Advancement Foundation), Inc.**

**Statement of Activities and Governmental Fund Revenues,
Expenditures, and Changes in Fund Balance**

<i>Year ended June 30, 2025</i>	General Fund	Reclassifications and Eliminations	Statement of Activities
Revenues			
Net investment income	\$ 178,076,148	\$ -	\$ 178,076,148
Proceeds from state appropriation	56,818,468	-	56,818,468
Proceeds from state settlement	25,000,000	-	25,000,000
Total Revenues	259,894,616	-	259,894,616
Expenditures/Expenses			
Grant distributions	85,487,453	-	85,487,453
Administrative costs	5,049,453	-	5,049,453
Line of credit expense	65,644	-	65,644
Capital outlays	49,051	(49,051)	-
Depreciation expense	-	116,154	116,154
Unrelated business income tax	839	-	839
Total Expenditures/Expenses	90,652,440	67,103	90,719,543
Revenues Over (Under)			
Expenditures/Expenses	169,242,176	(67,103)	169,175,073
Change in Fund Balance/Net Position	169,242,176	(67,103)	169,175,073
Fund Balance/Net Position, beginning of year	1,158,366,397	2,935,163	1,161,301,560
Fund Balance/Net Position, end of year	\$ 1,327,608,573	\$ 2,868,060	\$ 1,330,476,633

Grant ID	Organization	Project Title	Grant Amount	Program Area	Priority Funding Area	County of Applicant	Grant Begins	Grant End
G-202509-09662	Anson County Schools	Agri-Anson	\$300,000.00	CBGI - Community-Based Grants Initiative	Workforce Preparedness	Anson	2/6/2025	5/6/2026
G-202509-09654	South Piedmont Community College Foundation Inc	SPCC BioWorks Program	\$480,000.00	CBGI - Community-Based Grants Initiative	Workforce Preparedness	Anson	2/6/2025	9/7/2026
G-202509-09676	South Piedmont Community College Foundation Inc	HVAC-R Program at L.L. Polk Campus (Anson CBGI)	\$500,000.00	CBGI - Community-Based Grants Initiative	Workforce Preparedness	Anson	2/6/2025	2/6/2026
G-202508-09606	Beaufort County Community College	Nursing Expansion	\$405,000.00	Open Grants Program	Workforce Preparedness	Beaufort	2/6/2025	6/5/2026
G-202508-09596	Inner Banks STEM Center	Inner Banks STEM Center Capital Project	\$163,000.00	Open Grants Program	Workforce Preparedness	Beaufort	12/4/2024	11/4/2025
G-202410-08590	Christian Recovery Centers, Inc	Property Maintenance & Remodeling	\$175,000.00	Open Grants Program	Workforce Preparedness	Brunswick	10/3/2024	10/3/2025
G-202507-09579	Center for Agricultural and Food Entrepreneurship	Expanding FDA Manufacturing Capacity for Mountain Businesses	\$148,000.00	Open Grants Program	Job Creation and Economic Investment	Buncombe	12/4/2024	1/5/2026
G-202510-09733	Hola Carolina	Helene Relief Project	\$60,000.00	Disaster Relief Program	Other	Buncombe	11/8/2024	10/31/2025
G-202508-09619	Caldwell Hospice and Palliative Care Inc. dba AMOREM	Quality. Compassion. Support... A Patient Care Unit for the High Country	\$67,200.00	Open Grants Program	Job Creation and Economic Investment	Caldwell	12/4/2024	8/3/2025
G-202508-09610	Carteret Community College Foundation, Inc.	Carteret Works	\$297,860.00	Open Grants Program	Workforce Preparedness	Carteret	2/6/2025	2/5/2027
G-202510-09741	Carolina Farm Stewardship Association	Helene Relief Project	\$155,000.00	Disaster Relief Program	Other	Chatham	11/8/2024	10/31/2025
G-202509-09648	Cleveland County Schools	Healthcare Education Pathway	\$360,590.58	CBGI - Community-Based Grants Initiative	Workforce Preparedness	Cleveland	2/6/2025	2/5/2027
G-202509-09647	Cleveland Community College	Healthcare Educational Pathway	\$622,662.98	CBGI - Community-Based Grants Initiative	Workforce Preparedness	Cleveland	2/6/2025	2/5/2027
G-202509-09649	Gardner-Webb University	Healthcare Educational Pathway	\$290,408.52	CBGI - Community-Based Grants Initiative	Workforce Preparedness	Cleveland	2/6/2025	5/6/2027
G-202404-09398	Cleveland Community College	Expanding Heavy Equipment Operator Training	\$300,000.00	Open Grants Program	Workforce Preparedness	Cleveland	8/1/2024	8/1/2025
G-202512-09957	City of Whiteville	Provalus Building Renovations	\$500,000.00	Open Grants Program	Job Creation and Economic Investment	Columbus	2/6/2025	8/6/2025
G-202406-09539	Methodist University, Inc.	Job Creation and New Regional Educational Pathways with Methodist University Cape Fear Valley School of Medicine	\$8,000,000.00	Open Grants Program	Special Initiatives	Cumberland	8/1/2024	4/30/2026
G-202510-09739	The North Carolina Coalition Against Domestic Violence	Helene Relief Project	\$75,000.00	Disaster Relief Program	Other	Durham	10/25/2024	10/31/2025
G-202404-09428	Rural Opportunity Institute	Young Civic Leaders (YCL)	\$115,000.00	Open Grants Program	Workforce Preparedness	Edgecombe	10/3/2024	10/2/2026
G-202509-09658	Gaston College	Expansion of Gaston College Welding Program	\$125,000.00	CBGI - Community-Based Grants Initiative	Workforce Preparedness	Gaston	2/6/2025	12/5/2025

Grant ID	Organization	Project Title	Grant Amount	Program Area	Priority Funding Area	County of Applicant	Grant Begins	Grant End
G-202509-09663	Gaston College	Lincoln County Health Academy	\$1,034,600.00	CBGI - Community-Based Grants Initiative	Workforce Preparedness	Gaston	2/6/2025	6/5/2026
G-202406-09527	Greene County Schools	Greene CTE Facility Expansion	\$499,708.00	Open Grants Program	Workforce Preparedness	Greene	10/3/2024	10/3/2025
G-202512-09990	County of Greene	Greene County SITE Due Diligence	\$113,250.00	SITE Program	Job Creation and Economic Investment	Greene	4/3/2025	3/3/2026
G-202505-10502	City of Greensboro	Project Atlas (Infrastructure Improvements)	\$60,000,000.00	Economic Catalyst Program	Job Creation and Economic Investment	Guilford	10/1/2026	12/31/2031
G-202511-09900	The Housing Assistance Corporation	Helene Relief Project	\$100,000.00	Disaster Relief Program	Other	Henderson	12/18/2024	10/31/2025
G-202512-09930	County of Hoke	Hoke County Industrial Park	\$1,400,000.00	Economic Catalyst Program	Job Creation and Economic Investment	Hoke	3/1/2025	3/1/2026
G-202509-09655	Iredell County EDC, Foundation	Herring Industrial Dr. Expansion	\$750,000.00	CBGI - Community-Based Grants Initiative	Job Creation and Economic Investment	Iredell	2/6/2025	9/7/2026
G-202402-09178	Hights Inc	Career Connect	\$477,926.00	Open Grants Program	Workforce Preparedness	Jackson	10/3/2024	10/2/2026
G-202512-09972	Johnston Community College Foundation, Inc.	Workforce Development in Support of Advanced Manufacturing	\$500,000.00	Open Grants Program	Workforce Preparedness	Johnston	4/3/2025	4/3/2026
G-202510-09689	County of Lenoir	Lenoir County SITE Identification	\$15,000.00	SITE Program	Job Creation and Economic Investment	Lenoir	2/6/2025	8/7/2025
G-202401-08986	Martin Community College	EMS Simulation Center	\$499,899.14	Open Grants Program	Workforce Preparedness	Martin	8/1/2024	6/30/2025
G-202510-09821	Centro Unido Latino Americano	Helene Relief Project	\$60,000.00	Disaster Relief Program	Other	McDowell	11/8/2024	10/31/2025
G-202510-09729	Camp Grier	Helene Relief Project	\$100,000.00	Disaster Relief Program	Other	McDowell	10/25/2024	10/31/2025
G-202510-09747	Western North Carolina Annual Confer	Helene Relief Project	\$175,000.00	Disaster Relief Program	Other	Mecklenburg	10/25/2024	10/31/2025
G-202510-09823	Catholic Charities Diocese of Charlotte	Helene Relief Project	\$650,000.00	Disaster Relief Program	Other	Mecklenburg	11/8/2024	10/31/2025
G-202501-10144	Town of Nashville	Red Oak Road Water Extension Project	\$500,000.00	Open Grants Program	Job Creation and Economic Investment	Nash	6/5/2025	12/31/2026
G-202504-10376	County of Northampton	Northampton County Commerce Park Infrastructure Expansion	\$1,500,000.00	SITE Program	Job Creation and Economic Investment	Northampton	6/5/2025	12/4/2026
G-202509-09640	Jacksonville-Onslow Economic Development Partnership	Coffee	\$49,400.00	SITE Program	Job Creation and Economic Investment	Onslow	12/4/2024	12/4/2025
G-202404-09421	The University of North Carolina at Chapel Hill	Impacting Rural Communities through anchor institutions across North Carolina	\$250,000.00	Open Grants Program	Job Creation and Economic Investment	Orange	8/1/2024	7/31/2026
G-202402-09102	College of the Albemarle	COA Health Sciences Regional Education Center	\$500,000.00	Open Grants Program	Workforce Preparedness	Pasquotank	4/3/2025	6/3/2026
G-202510-09754	Elizabeth City Pasquotank Public Schools	Innovative Pathways to Careers	\$166,000.00	Open Grants Program	Workforce Preparedness	Pasquotank	2/6/2025	5/6/2028

Grant ID	Organization	Project Title	Grant Amount	Program Area	Priority Funding Area	County of Applicant	Grant Begins	Grant End
G-202411-08707	ENC FCC	Project EFFORT (Equipment For Food Opportunities in Rural Towns)	\$500,000.00	Open Grants Program	Agriculture	Pitt	10/3/2024	2/3/2026
G-202502-10230	Randolph Community College	Heavy Duty Equipment Simulator	\$493,000.00	Open Grants Program	Workforce Preparedness	Randolph	6/5/2025	8/5/2026
G-202510-09786	City of Lumberton	Southeast Crossroads Industrial Park Electrical Line Relocation & Upgrade	\$825,000.00	Economic Catalyst Program	Job Creation and Economic Investment	Robeson	12/4/2024	6/4/2025
G-202508-09605	County of Robeson	Robeson County Site Development Project	\$1,500,000.00	SITE Program	Job Creation and Economic Investment	Robeson	12/4/2024	10/22/2026
G-202509-09642	Rowan-Cabarrus Community College	Expanding Automotive Technology Pathways in Cabarrus County	\$1,250,000.00	CBGI - Community-Based Grants Initiative	Workforce Preparedness	Rowan	2/6/2025	6/7/2027
G-202509-09650	Rowan-Salisbury School System	Implementing Global Logistics Program	\$325,000.00	CBGI - Community-Based Grants Initiative	Workforce Preparedness	Rowan	2/6/2025	4/6/2028
G-202509-09651	Rowan-Cabarrus Community College	Expanding Advanced Manufacturing Pathways at RCCC	\$975,000.00	CBGI - Community-Based Grants Initiative	Workforce Preparedness	Rowan	2/6/2025	6/7/2027
G-202511-09878	Rutherford Housing Partnership Inc.	Helene Relief Project	\$100,000.00	Disaster Relief Program	Other	Rutherford	12/18/2024	10/31/2025
G-202510-09776	Harrells Christian Academy Inc	HCA Agricultural Education Building	\$350,000.00	Open Grants Program	Workforce Preparedness	Sampson	2/6/2025	12/5/2025
G-202509-09644	Stanly Community College Foundation, Inc.	Engineering and Information Technology Pathways – Dual-Enrollment and Apprenticeships	\$750,000.00	CBGI - Community-Based Grants Initiative	Workforce Preparedness	Stanly	2/6/2025	4/6/2027
G-202404-09397	Stanly Community College Foundation, Inc.	Crafting Tomorrow: CNC Machining Education in Stanly County	\$250,000.00	Open Grants Program	Workforce Preparedness	Stanly	8/1/2024	8/1/2025
G-202511-09909	Transylvania Habitat for Humanity	Helene Relief Project	\$100,000.00	Disaster Relief Program	Other	Transylvania	12/18/2024	10/31/2025
G-202509-09653	Union County Government	Union County Food Innovation Center	\$1,000,000.00	CBGI - Community-Based Grants Initiative	Agriculture	Union	2/6/2025	2/5/2027
G-202510-09700	Vance County	Vance County - Site Identification	\$15,000.00	SITE Program	Job Creation and Economic Investment	Vance	2/6/2025	2/6/2026
G-202510-09721	North Carolina Baptist Men	Helene Relief Project	\$2,940,000.00	Disaster Relief Program	Other	Wake	10/25/2024	10/31/2025
G-202509-09675	North Carolina State Education Assistance Authority	Golden LEAF Colleges and Universities Scholarship (2025-2026)	\$3,116,173.00	Golden LEAF Scholarships	Scholarship	Wake		
G-202503-10309	North Carolina Community College System	Golden LEAF Community Colleges Scholarship (2025-2026)	\$3,000,000.00	Golden LEAF Scholarships	Scholarship	Wake		
G-202510-09789	Legal Aid of North Carolina, Inc.	Helene Relief Project	\$225,000.00	Disaster Relief Program	Other	Wake	11/8/2024	10/31/2025
G-202510-09748	Hospitality House of Northwest North	Helene Relief Project	\$107,654.00	Disaster Relief Program	Other	Watauga	11/8/2024	10/31/2025
G-202510-09819	W A M Y Community Action, Inc.	Helene Relief Project	\$150,000.00	Disaster Relief Program	Other	Watauga	11/8/2024	10/31/2025
G-202508-09583	Spiron Solutions	Rural Internship Initiative	\$83,115.00	Golden LEAF Scholarships	Scholarship	Wayne		

Grant ID	Organization	Project Title	Grant Amount	Program Area	Priority Funding Area	County of Applicant	Grant Begins	Grant End
G-202512-09962	Habitat for Humanity of Goldsboro-Wayne Inc	McNair Heights Neighborhood Development	\$500,000.00	Open Grants Program	Job Creation and Economic Investment	Wayne	4/3/2025	5/4/2026
G-202406-09500	Wilson Community College	Wilson Biologics Training Center Equipment	\$13,000,000.00	Economic Catalyst Program	Job Creation and Economic Investment	Wilson	10/3/2024	4/3/2027
G-202512-10050	Sallie B. Howard School of Arts and Science	CTE/Biotech Expansion	\$120,986.00	Open Grants Program	Workforce Preparedness	Wilson	6/5/2025	11/5/2025
G-202504-10378	Barton College	Barton College School of Health Sciences- Phase 1	\$1,000,000.00	Open Grants Program	Workforce Preparedness	Wilson	6/5/2025	6/5/2026

*End Term reflects current anticiapted end of grant term unless Golden LEAF approves an extension